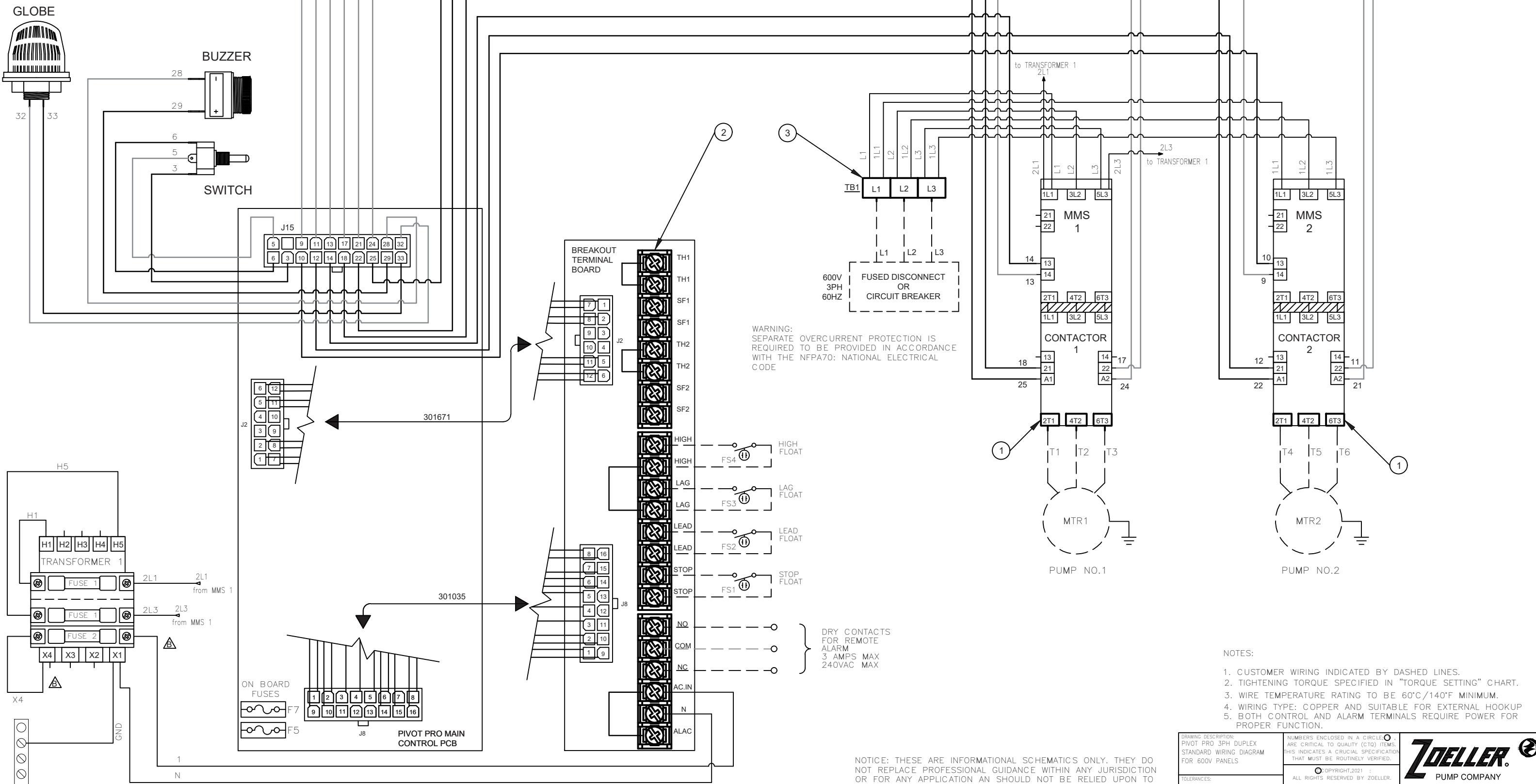


DRAWING REVISIONS				
LTR	BY	DATE	ECO #	DESCRIPTION
A	AF	12/06/21	11351	RELEASE
B	PY	08/08/22	11531	MFR WIRING UPDATED

CUSTOMER TORQUE SETTING		
NUMBER	COMPONENT	TORQUE
1	CONTACTORS	1.7 N.m. 15 lb-in
2	BREAKOUT TERMINAL BOARD	1.15 N.m. 10 lb-in
3	TERMINAL BLOCK	1.8 N.m. 16 lb-in



WARNING: SEPARATE OVERCURRENT PROTECTION IS REQUIRED TO BE PROVIDED IN ACCORDANCE WITH THE NFPA70: NATIONAL ELECTRICAL CODE

- NOTES:
1. CUSTOMER WIRING INDICATED BY DASHED LINES.
 2. TIGHTENING TORQUE SPECIFIED IN "TORQUE SETTING" CHART.
 3. WIRE TEMPERATURE RATING TO BE 60°C/140°F MINIMUM.
 4. WIRING TYPE: COPPER AND SUITABLE FOR EXTERNAL HOOKUP
 5. BOTH CONTROL AND ALARM TERMINALS REQUIRE POWER FOR PROPER FUNCTION.

NOTICE: THESE ARE INFORMATIONAL SCHEMATICS ONLY. THEY DO NOT REPLACE PROFESSIONAL GUIDANCE WITHIN ANY JURISDICTION OR FOR ANY APPLICATION AN SHOULD NOT BE RELIED UPON TO DO SO

DRAWING DESCRIPTION: PIVOT PRO 3PH DUPLEX STANDARD WIRING DIAGRAM FOR 600V PANELS		NUMBERS ENCLOSED IN A CIRCLE (○) ARE CRITICAL TO QUALITY (CTQ) ITEMS. THIS INDICATES A CRUCIAL SPECIFICATION THAT MUST BE ROUTINELY VERIFIED.			
TOLERANCES: X ±.1 XX ±.05 XXX ±.010		ALL RIGHTS RESERVED BY ZOELLER. ELECTRONIC SCALE: 1X DO NOT SCALE PRINT EXCEPT AS NOTED DIMENSIONS ARE IN INCHES.			
DRAFTER: A.FERNANDES		DATE: 12/06/21		DRAFTSMAN: Alejandro Barrera 8/12/22 Jot Bepakadu 8/15/22	
PART NUMBER: 303149		PART REVISION: A		DRAWING NUMBER: 303149	

GROUND BAR

