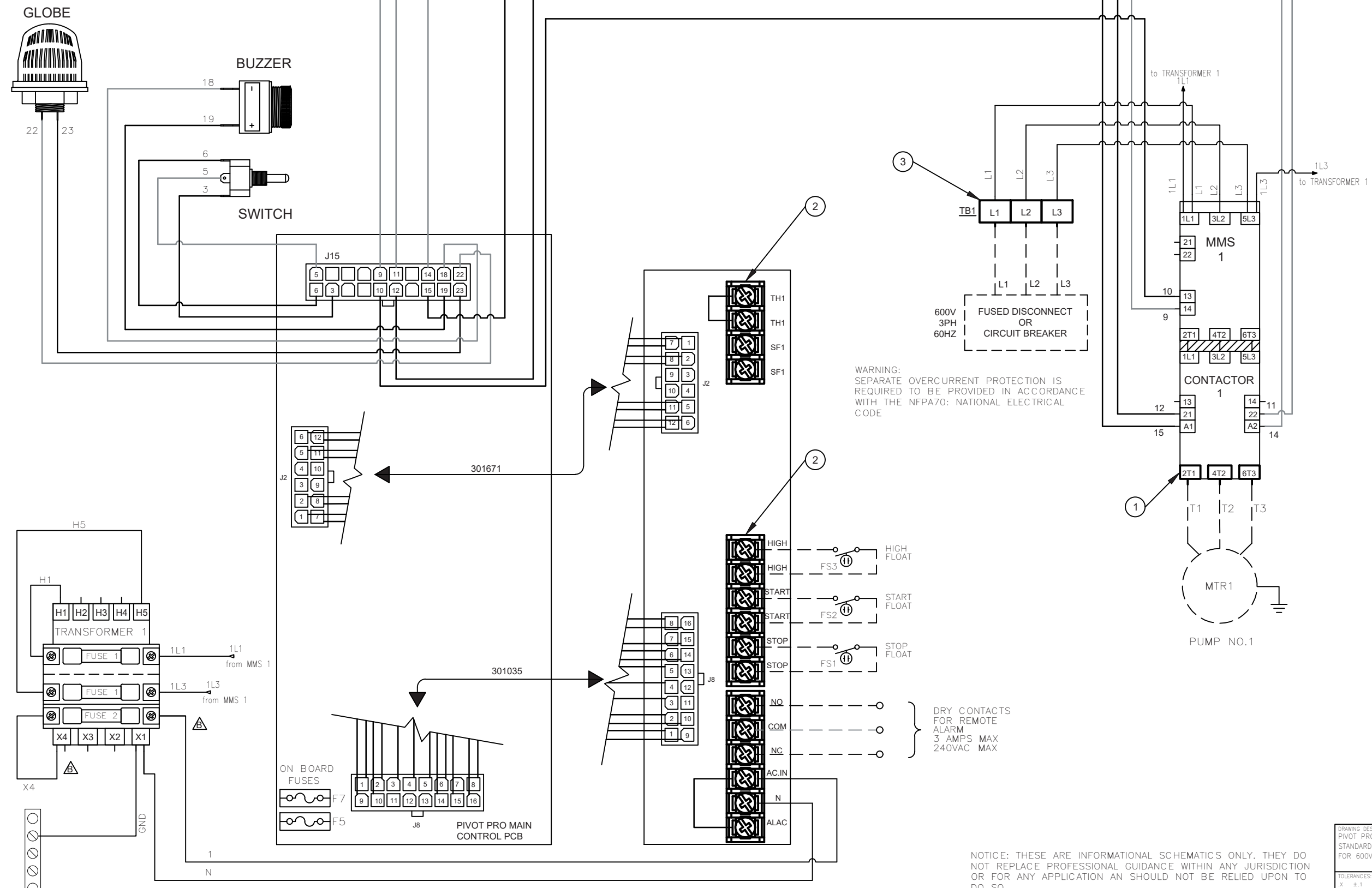


DRAWING REVISIONS				
LTR	BY	DATE	ECO #	DESCRIPTION
A	AF	12/06/21	11351	RELEASE
B	PY	11/11/22	11554	TRANSFORMER & TORQUE UPDATED

CUSTOMER TORQUE SETTING		
NUMBER	COMPONENT	TORQUE
1	CONTACTOR LC1D09G7-LC1D32G7	1.7 N.m. 15 lb-in
	CONTACTOR LC1D40AG7-LC1D50G7	5-8 N.m. 70 lb-in
2	BREAKOUT TERMINAL BOARD	1.15 N.m. 10 lb-in
3	TERMINAL BLOCK 6mm ² -CROSS SECTION	1.5-1.8 N.m. 13.3-15.9 lb-in
	TERMINAL BLOCK 16mm ² -CROSS SECTION	2.5-3 N.m. 22.1-26.5 lb-in



WARNING:
SEPARATE OVERCURRENT PROTECTION IS
REQUIRED TO BE PROVIDED IN ACCORDANCE
WITH THE NFPA70: NATIONAL ELECTRICAL
CODE

- NOTES:
1. CUSTOMER WIRING INDICATED BY DASHED LINES.
 2. TIGHTENING TORQUE SPECIFIED IN "TORQUE SETTING" CHART.
 3. WIRE TEMPERATURE RATING TO BE 60°C/140°F MINIMUM.
 4. WIRING TYPE: COPPER AND SUITABLE FOR EXTERNAL HOOKUP
 5. BOTH CONTROL AND ALARM TERMINALS REQUIRE POWER FOR PROPER FUNCTION.

NOTICE: THESE ARE INFORMATIONAL SCHEMATICS ONLY. THEY DO NOT REPLACE PROFESSIONAL GUIDANCE WITHIN ANY JURISDICTION OR FOR ANY APPLICATION AN SHOULD NOT BE RELIED UPON TO DO SO

DRAWING DESCRIPTION: PIVOT PRO 3PH SIMPLEX STANDARD WIRING DIAGRAM FOR 600V PANELS		NUMBERS ENCLOSED IN A CIRCLE ○ ARE CRITICAL TO QUALITY (CTQ) ITEMS. THIS INDICATES A CRUCIAL SPECIFICATION THAT MUST BE ROUTINELY VERIFIED.			
TOLERANCES: X ±.1 XX ±.05 XXX ±.010		ELECTRONIC SCALE: 1X DO NOT SCALE PRINT EXCEPT AS NOTED DIMENSIONS ARE IN INCHES.			
DRAFTER: A.FERNANDES		DATE: 12/06/21		ALL RIGHTS RESERVED BY ZOELLER. PART NUMBER: 30314B PART REVISION: A DRAWING NUMBER: 30314B SHEET: 1 OF 2	

