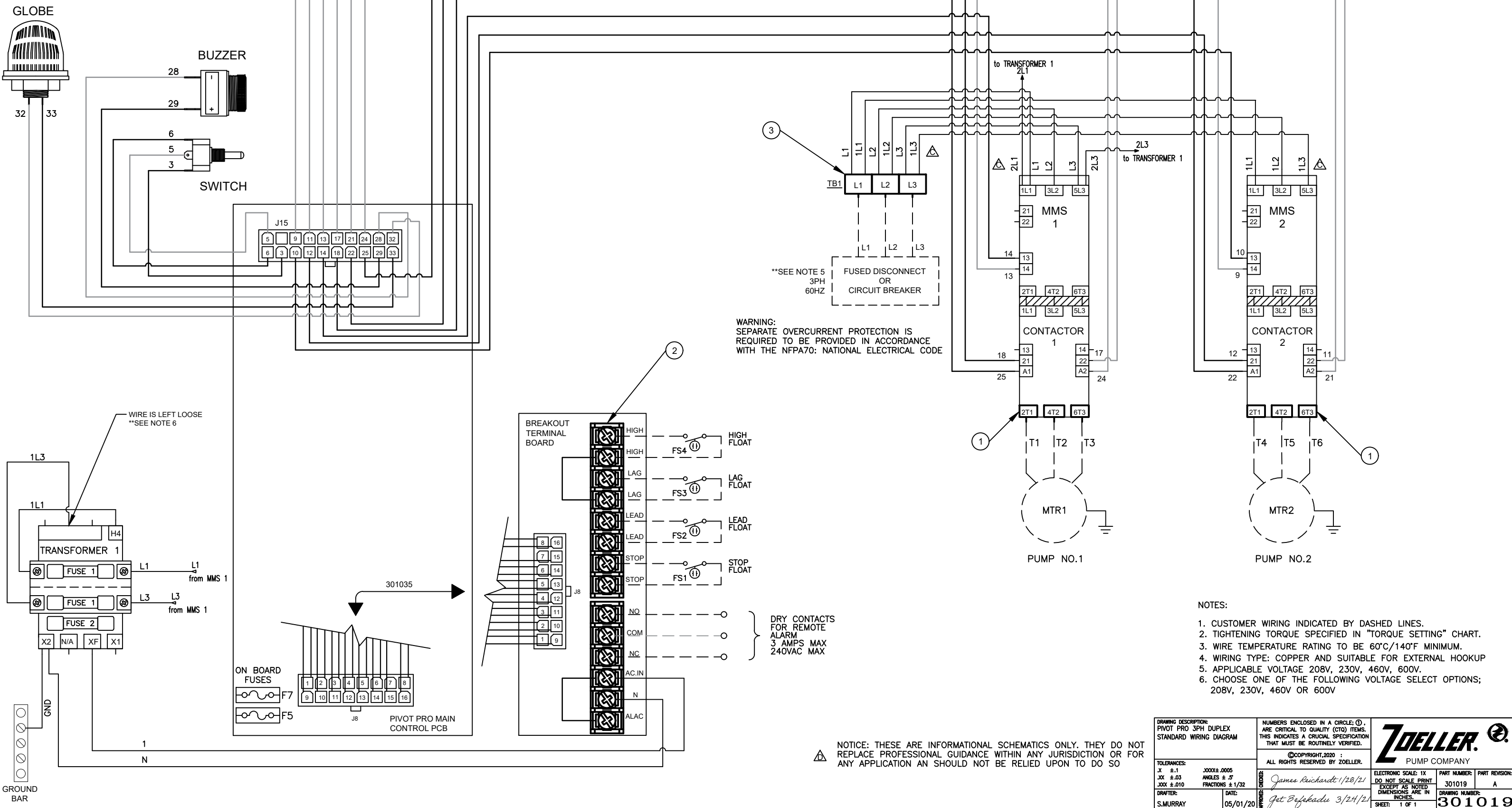


DRAWING REVISIONS				
LTR	BY	DATE	ECO #	DESCRIPTION
A	ISM	05/01/20	11069	RELEASE
B	AF	08/20/20	11098	JUMPERS ADDED
C	AF	9/15/20	11110	WIRE LABELS CHANGED
D	AF	01/13/21	11188	LEGAL NOTICE ADDED

CUSTOMER TORQUE SETTING		
NUMBER	COMPONENT	TORQUE
1	CONTACTORS	1.7 N.m. 15 lb-in
2	BREAKOUT TERMINAL BOARD	1.15 N.m. 10 lb-in
3	TERMINAL BLOCK	1.8 N.m. 16 lb-in



WARNING: SEPARATE OVERCURRENT PROTECTION IS REQUIRED TO BE PROVIDED IN ACCORDANCE WITH THE NFPA70: NATIONAL ELECTRICAL CODE

- NOTES:
1. CUSTOMER WIRING INDICATED BY DASHED LINES.
  2. TIGHTENING TORQUE SPECIFIED IN "TORQUE SETTING" CHART.
  3. WIRE TEMPERATURE RATING TO BE 60°C/140°F MINIMUM.
  4. WIRING TYPE: COPPER AND SUITABLE FOR EXTERNAL HOOKUP
  5. APPLICABLE VOLTAGE 208V, 230V, 460V, 600V.
  6. CHOOSE ONE OF THE FOLLOWING VOLTAGE SELECT OPTIONS; 208V, 230V, 460V OR 600V

NOTICE: THESE ARE INFORMATIONAL SCHEMATICS ONLY. THEY DO NOT REPLACE PROFESSIONAL GUIDANCE WITHIN ANY JURISDICTION OR FOR ANY APPLICATION AN SHOULD NOT BE RELIED UPON TO DO SO

DRAWING DESCRIPTION: PIVOT PRO 3PH DUPLEX STANDARD WIRING DIAGRAM		NUMBERS ENCLOSED IN A CIRCLE: ①, ARE CRITICAL TO QUALITY (CTQ) ITEMS. THIS INDICATES A CRUCIAL SPECIFICATION THAT MUST BE ROUTINELY VERIFIED.			
TOLERANCES: X ±.1 XX ±.03 XXX ±.010		©COPYRIGHT, 2020 : ALL RIGHTS RESERVED BY ZOELLER. James Richards 1/28/21 get Bafekadu 3/24/21			
DRAFTER: S.MURRAY		DATE: 05/01/20		ELECTRONIC SCALE: 1X DO NOT SCALE PRINT EXCEPT AS NOTED DIMENSIONS ARE IN INCHES.	PART NUMBER: 301019 PART REVISION: A
SHEET: 1 OF 1				DRAWING NUMBER: 301019	