

Product information presented here reflects conditions at time of publication. Consult factory regarding discrepancies or inconsistencies.



MAIL TO: P.O. BOX 16347 • Louisville, KY 40256-0347
 SHIP TO: 3649 Cane Run Road • Louisville, KY 40211-1961
 TEL: (502) 778-2731 • 1 (800) 928-PUMP • FAX: (502) 774-3624

Visit our website:
 zoellerpumps.com

Zoeller 5050 Series Recirculating Float & Splitter Valves INSTALLATION INSTRUCTIONS



INSTALLATION INSTRUCTIONS AND PREINSTALLATION CHECKLIST

1. Inspect materials upon delivery. Occasionally, products are damaged during shipment. If materials are damaged, contact your dealer prior to installation.
2. Read the relevant literature and installation instructions carefully to become familiar with the product and proper installation procedures.
3. The use of a septic tank effluent filter is strongly recommended in order to protect downstream components from accumulating solids.

CAUTION All installations must comply with applicable electrical and plumbing codes, including, but not limited to, National Electrical Code, local, regional, and/or state codes, etc.

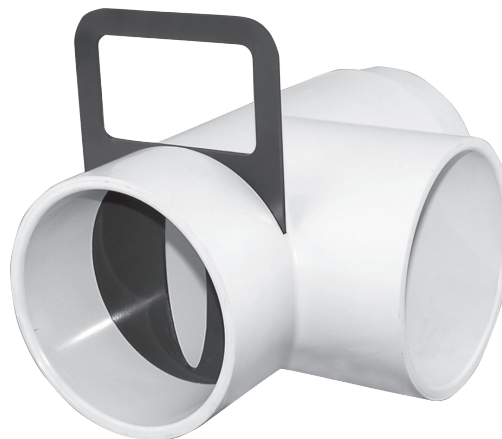
CAUTION The splitter valve must be level across the outlets.

CAUTION Be sure the disposal pipe does not settle after the splitter valve is installed.

Figure 1 5050-0002
 Recirculating Float Valve



Figure 2 5050-0003 Splitter Valve



Part Number	Description	Minimum Riser Diameter
5050-0001	Recirculating Float Valve and Splitter Valve Combo	36"
5050-0002	Recirculating Float Valve	24"
5050-0003	Splitter Valve	24"
5080-0011	4" Pipe Seal	N/A

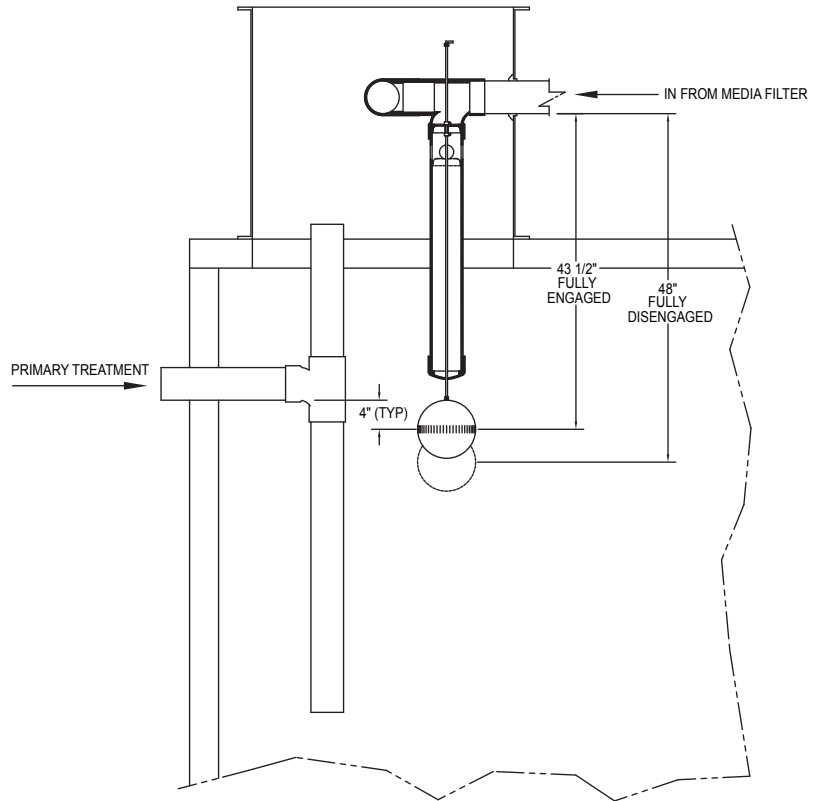
Recirculating Float Valve

The recirculating float valve is designed to recirculate 100% of the incoming wastewater until the water level in the tank reaches a set limit and closes the valve. If it is used alone (5050-0002), 100% of the water is diverted to disposal when the float is fully engaged. When the Recirculating Float Valve is used in conjunction with the splitter valve (5050-0001), and the float is fully engaged, 100% of the water is diverted to the splitter valve, where it is divided by a percentage determined by the weir.

The Recirculating Float Valve should be plumbed in a riser above the recirculation tank. See chart for minimum riser diameter required. In addition, use a 4" pipe seal where pipes penetrate the riser to ensure a water tight system.

For standard operating dimensions see Figure 3. Elevations should be specified and verified by an engineer. Valve seating can be adjusted with the set screws located on the ball float rod.

Figure 3 5050-0001
Deluxe Valve (side view)



SK2665

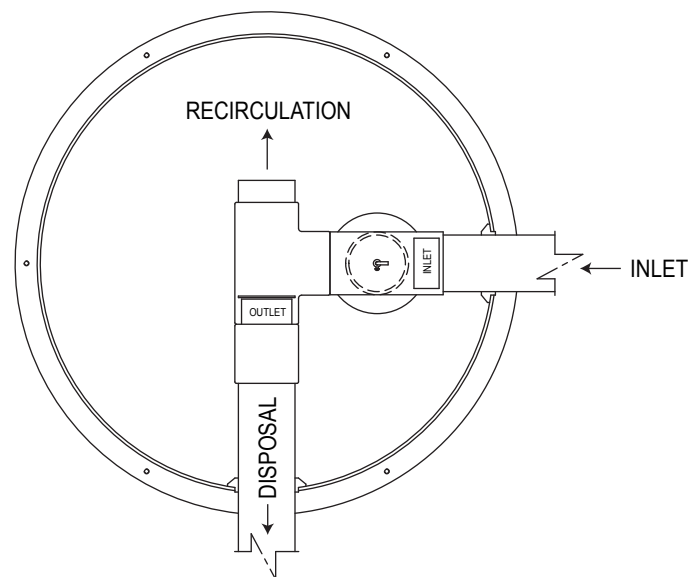
Splitter Valve

The splitter valve has an inlet and two outlets. One outlet is for recirculation and should be piped to the recirculation or dosing tank. In most instances, the splitter valve will be plumbed directly into the riser above the recirculation tank. In these installations, water can pour directly out of the valve and fall back into the recirculation tank. The disposal outlet contains the weir and should be piped to the disposal component of the wastewater treatment system. Use a 4" pipe seal where pipes penetrate the riser to ensure a water tight system.

Connect the piping by solvent welding 4" schedule 40 pipes to the appropriate ports. When gluing the inlet pipe, lay a small level across the body of the splitter valve to ensure that the two outlet ports are level. Clean excess glue from around the weir so that its operation and removal will not be impeded.

The standard weir supplied with the splitter valve diverts 80% of the incoming wastewater to recirculation and 20% to disposal. Consult factory for weirs capable of splitting in other proportions.

Figure 4 5050-0001
Deluxe Valve (top view)



DELUXE FLOAT VALVE TOP VIEW
36" DIA FIBERGLASS BASIN EXTENSION

SK2665