

# Drip Line and Accessories

Distribute Treated Effluent Effectively Into Tough Soils

Zoeller Pump Company's subsurface drip distribution equipment provides one of the most efficient and cost effective ways to turn a poor-soil site into usable property. The end result is even wastewater distribution, leading to better effluent treatment with less chance of soil clogging.



## Features

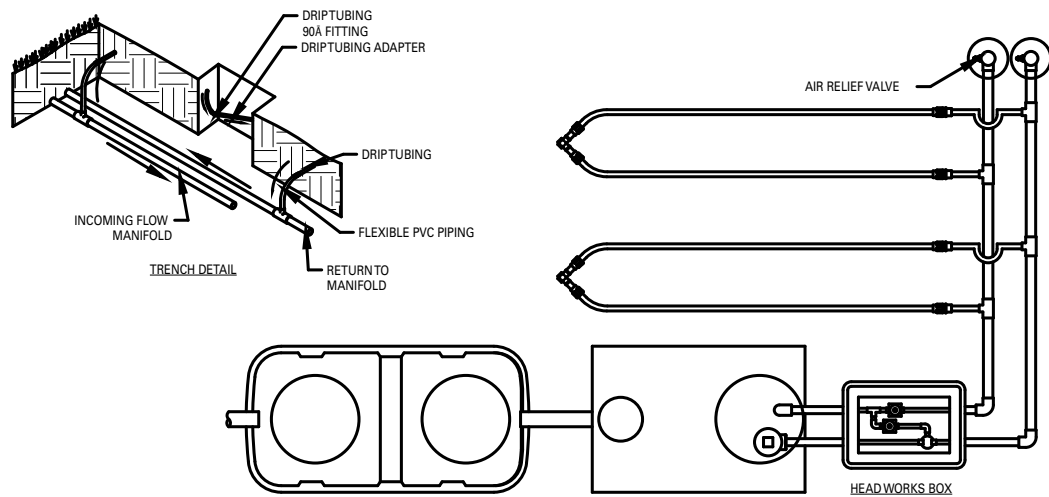
- Installation requires minimal site disturbance
- Flexible installation can be adapted to most sites
- Natural landscaping can be maintained
- Ideal for steep slopes, uneven terrain, and rocky soils
- Applications for residential, cluster and community systems



Trusted. Tested. Tough.®

zoellerpumps.com 800-928-7867  
3649 Cane Run Road, Louisville, KY 40211 USA

CL0099  
0221  
Supersedes  
0219



SK3229

Pressurized drip tubing is installed 6"-12" deep in the most biologically active zone of the soil. This shallow placement helps to overcome limiting site characteristics such as high water tables and other restrictive soils. The drip system disperses effluent below the ground surface through 1/2" flexible tubing. Emitters in the drip line are spaced every 2'. Individual drip lines are typically installed on 2' centers.

Drip Line and Accessories	
Part Number	Description
5056-0001	500' Roll of .5" dia polyethylene tubing, 0.53 gpm
5056-0002	Drip fitting, adapter, .5 tubing x .75 spigot
5056-0003	Drip fitting, coupling, .5 tubing x .5 tubing
5056-0004	Drip fitting, elbow, .5 tubing
5056-0005	1" Air relief valve, MPT
5056-0006	6" Dia round valve box
5056-0007	90° Elbow, 1.25" slip x 1" FPT, Sch 40
5056-0008	90° Elbow, 1.5" slip x 1" FPT, Sch 40
5056-0011	1" Autoflush filter system (up to 30 gpm), residential
5056-0012	1" FIPT solenoid valve
5056-0013	1.5" FIPT solenoid valve
5056-0014	2" FIPT solenoid valve
5056-0024	.5" Dia flexible PVC pipe, 50' roll
5056-0025	2" Autoflush filter system (30-180 gpm), commercial
5056-0026	2" Air relief valve, FPT
5056-0030	10" Dia round valve box ( for use with 5056-0025)
5056-0031	Victaulic hardware pack ( for use with 5056-0025)
5056-0032	.5" X 500' Drip line roll with 24" emitters (min 21 req'd)
5056-0034	Tee, 1.25" slip x 1.25" slip x .5" slip, Sch 40
5056-0035	Tee, 1.5" slip x 1.5" slip, .5" slip, Sch 40
5056-0044	Drip fitting, tee, .5 tubing x .5 tubing
10-1470	Control panel, dup, 115/230V, 0-20A, TD autoflushing (for use with 5056-0011)
10-1523	Control panel, sim, 115/230V, 0-20A, TD autoflushing (for use with 5056-0011)