

WW4 Effluent Filter

Protects Drainfield Components By Screening Effluent In Residential Or Commercial Applications With Flows Up To 4,000 Gpd Per Filter



Features

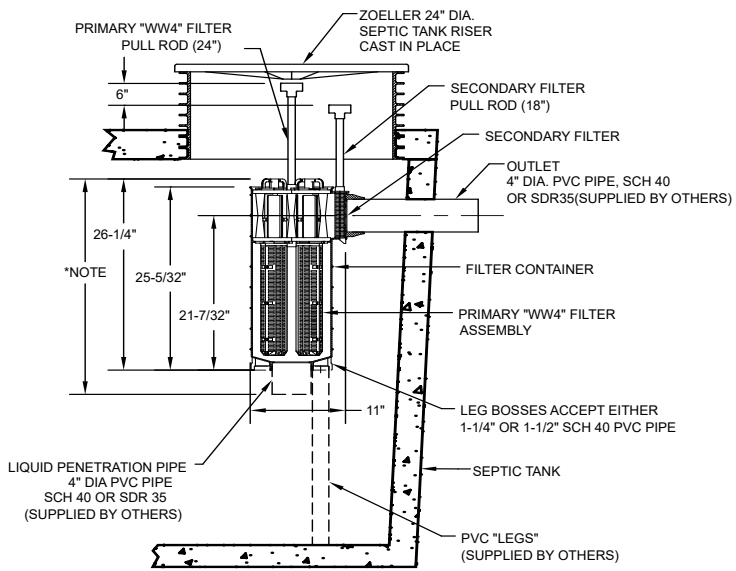
- Rated for 4,000 gpd
- Can be clustered together for higher flow applications
- 528 linear feet of 1/16" filtration
- Attaches to 4" SCH 40 or SDR 35 PVC outlet pipe
- Easy to install and maintain in new or existing septic tanks
- Integral bypass protection screen
- Lifetime warranty
- Alarms and filter socks available



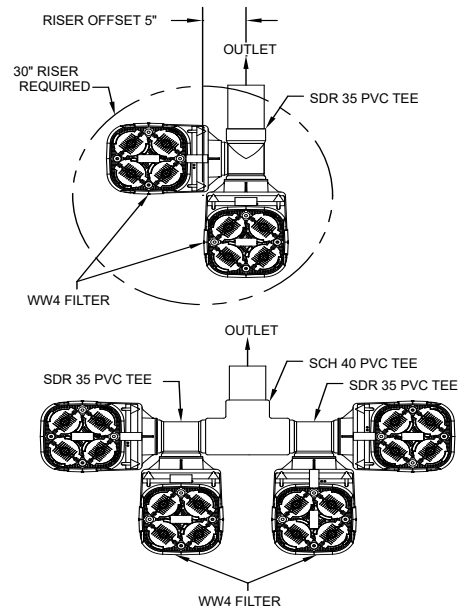
Trusted. Tested. Tough.®

zoellerpumps.com 800-928-7867
3649 Cane Run Road, Louisville, KY 40211 USA

3.20.060
CL0045
0121
Supersedes
0119



*NOTE: STATE AND LOCAL PLUMBING CODES MAY REQUIRE A SPECIFIC LIQUID PENETRATION. FOR EXAMPLE, 25% - 40% INTO THE LIQUID DEPTH OR 9" OFF THE TANK BOTTOM.



SK2318

Part Number	Description
5000-0007	WW4 effluent filter
5000-0010	1/32" filter sock for WW4
153240	Primary filter cartridge assembly
153241	Secondary screen
10-0623	A-Pak® effluent filter alarm (with mechanical float)
5090-0014	Alarm bracket assembly

